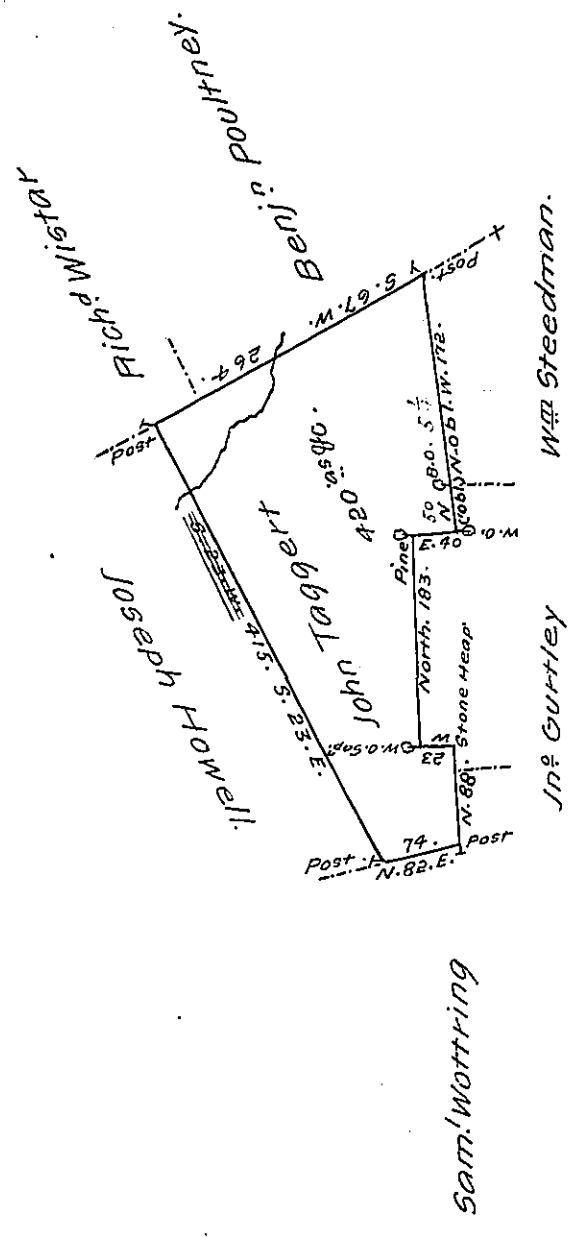


Butler  
Luzerne.



Draft of a tract of land Called \_\_\_\_\_ Situate on the Waters of  
 Nescopeck Creek in the County of Luzerne containing four hund-  
 red & twenty Acres & allowance. Surveyed for John Taggart the  
 24<sup>th</sup> day of May <sup>1793</sup> by virtue of a Warrant dated the 1<sup>st</sup> day of  
 April 1793.

by W<sup>m</sup> Gray. D.(obl.)

To Dob little &ated.  
 Esq. Surv. Gen!

IN TESTIMONY that the above is a copy of the original remaining on file in  
 the Department of Internal Affairs of Pennsylvania, made  
 conformably to an Act of Assembly approved the 16th day of  
 February, 1833, I have hereunto set my Hand and caused  
 the Seal of said Department to be affixed at Harrisburg,  
 this third day of April 1907.

*George B. Brown*  
 Secretary of Internal Affairs.